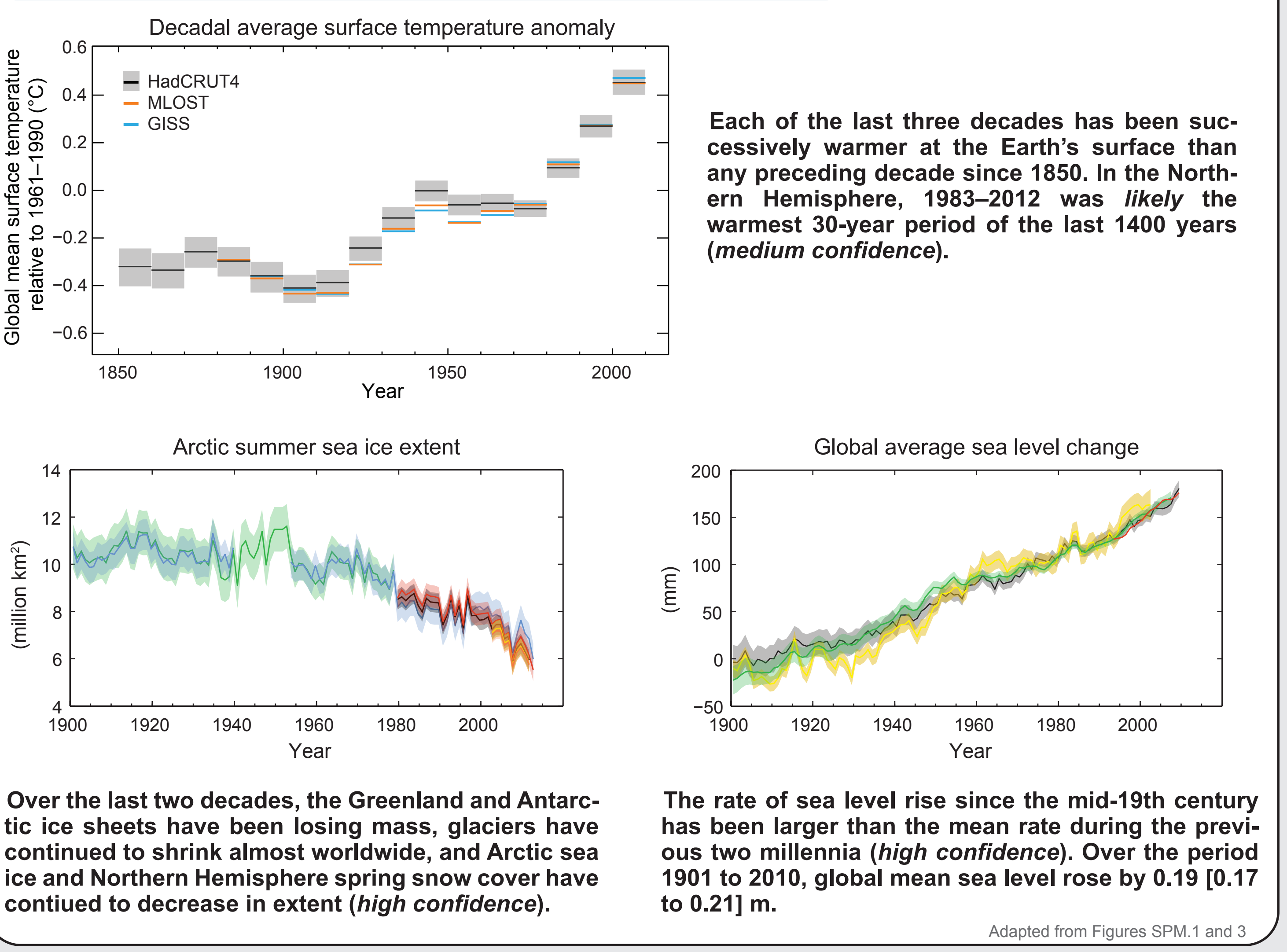


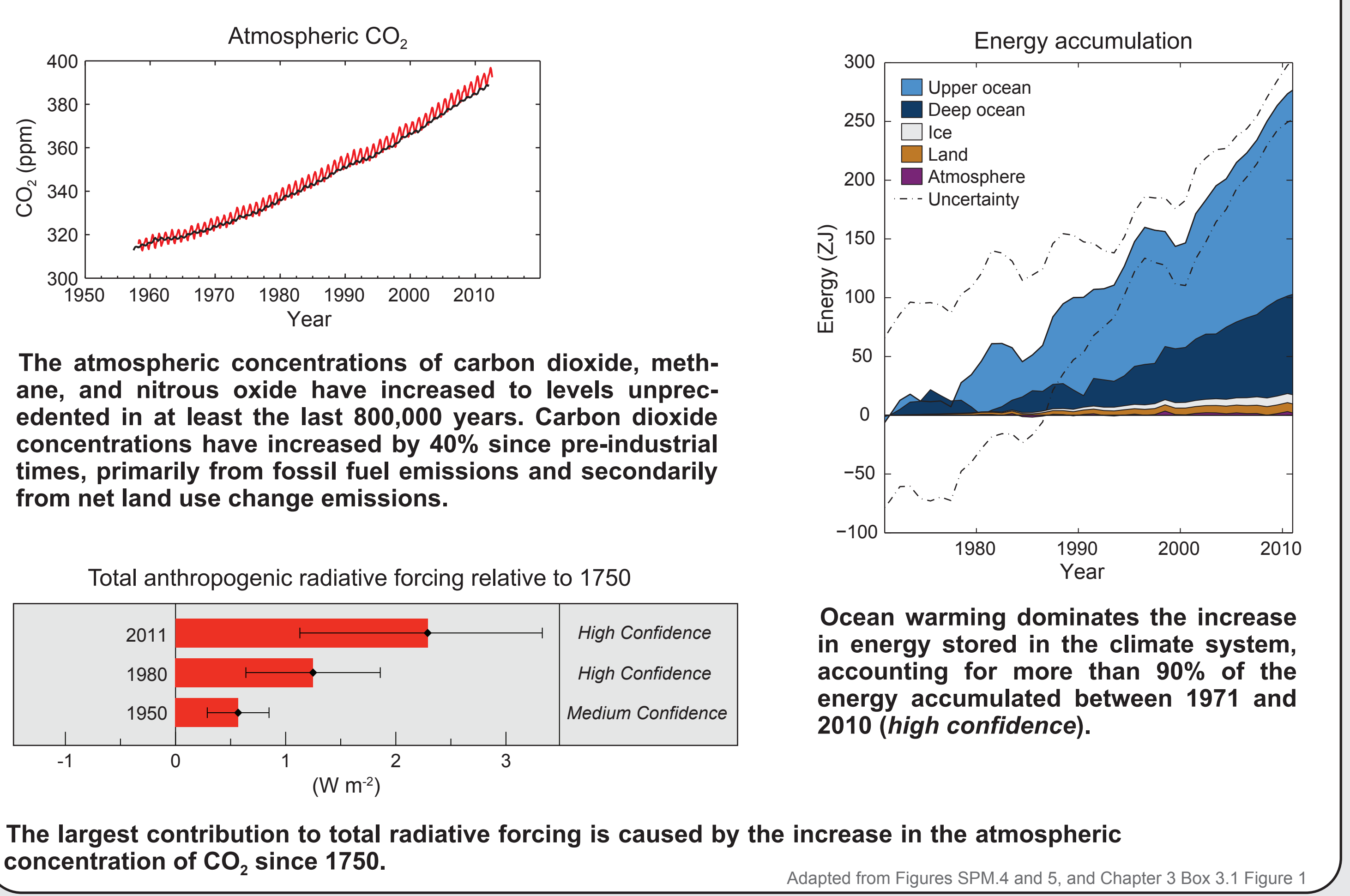
### INTRODUCTION

The Working Group I contribution to the IPCC Fifth Assessment Report (WG1 AR5) provides a comprehensive assessment of the physical science basis of climate change, drawing on the scientific literature accepted for publication up to 15 March 2013. The WG1 AR5 Summary for Policymakers was approved at the Twelfth Session of Working Group I, held in Stockholm, Sweden, from 23 to 26 September, 2013. The session also accepted the Technical Summary and underlying scientific assessment contained in 14 chapters and related annexes. The narrative of the Summary for Policymakers follows the structure of the full report, and is supported by a series of overarching headline statements.

### Warming of the climate system is unequivocal



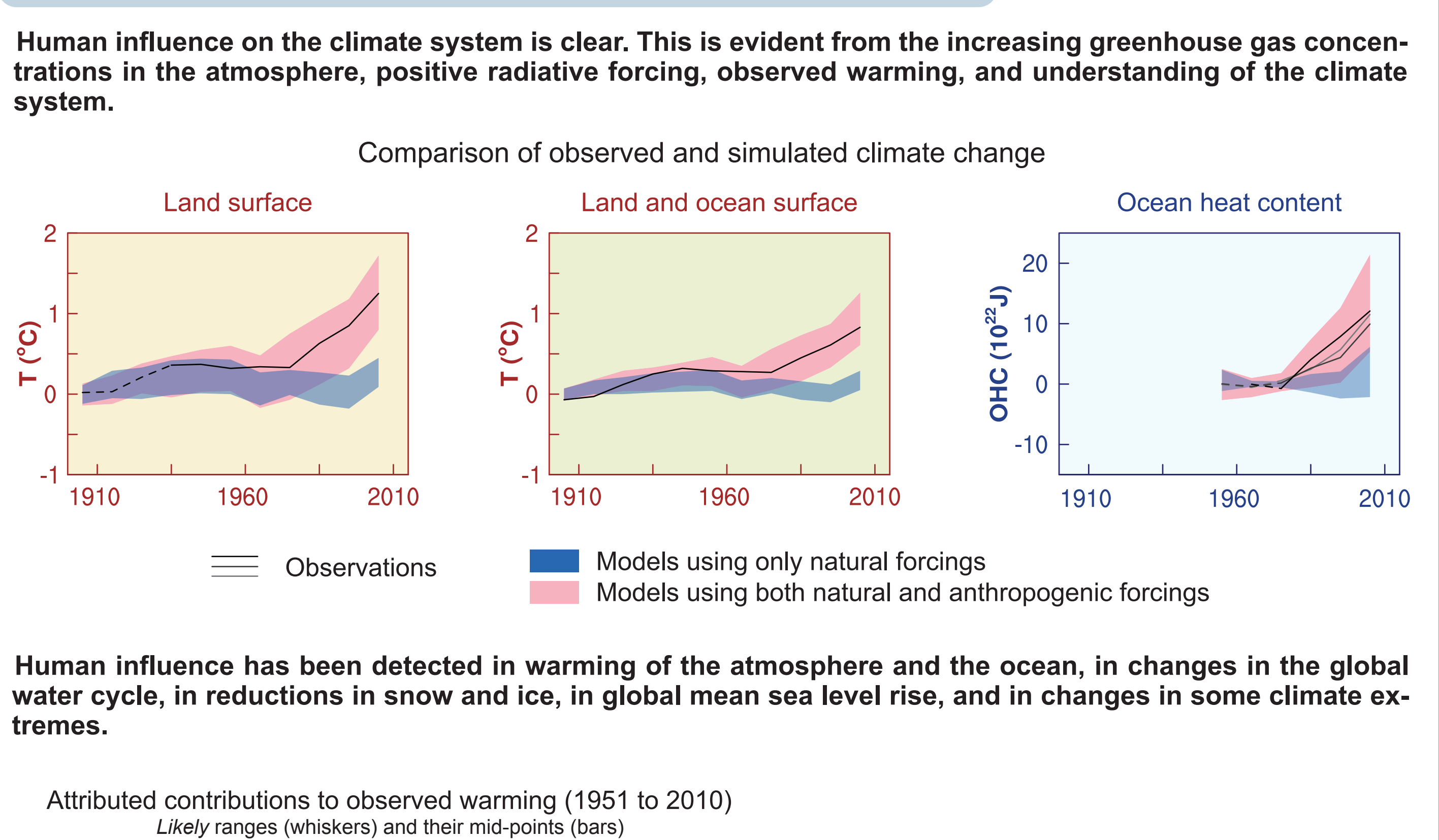
### Total radiative forcing is positive and has led to uptake of energy by the climate system



### REPORT STRUCTURE

- Introduction (Chapter 1)
- Observations and Paleoclimate Information (Chapters 2, 3, 4, 5)
- Process Understanding (Chapters 6, 7)
- From Forcing to Attribution of Climate Change (Chapters 8, 9, 10)
- Future Climate Change and Predictability (Chapters 11, 12)
- Integration (Chapters 13, 14)
- Annexes
- Supplementary material

### Human influence on the climate system is clear

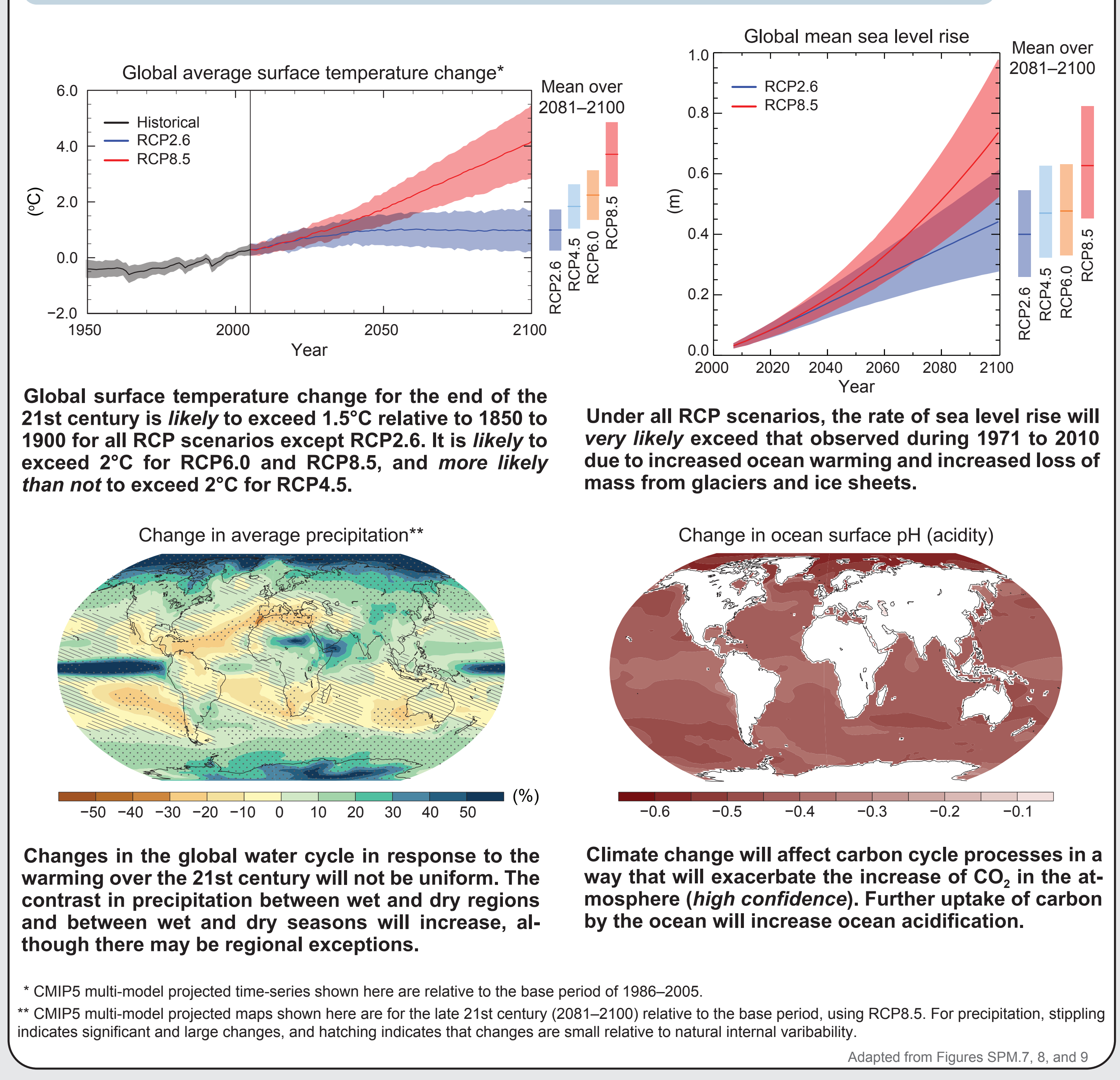


IPCC, 2013: *Climate Change 2013: The Physical Science Basis. Contribution of Working Group I to the Fifth Assessment Report of the Intergovernmental Panel on Climate Change* [Stocker, T. F., D. Qin, G.-K. Plattner, M. Tignor, S. K. Allen, J. Boschung, A. Nauels, Y. Xia, V. Bex and P. M. Midgley (eds.)]. Cambridge University Press, Cambridge, United Kingdom and New York, NY, USA, 1535 pp.

[www.climatechange2013.org](http://www.climatechange2013.org)

Contact: [wg1@ipcc.unibe.ch](mailto:wg1@ipcc.unibe.ch)

### Continued emissions of greenhouse gases will cause further warming and changes in all components of the climate system



### Limiting climate change will require substantial and sustained reductions of greenhouse gas emissions

